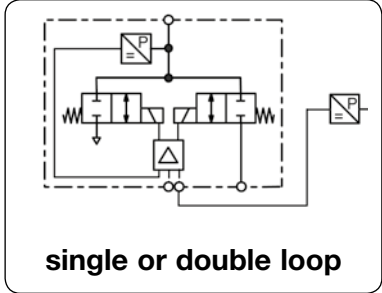


Description	Proportional control valve with closed loop control technology for better control of pressurised gases. The instrument can be built as single closed loop or dual closed loop control valve. dry, lubricated or unlubricated and 20 µm filtered compressed air or non-corrosive gases constant outlet pressure at voltage drop	
Media	0-10 V, impedance 4.7 kΩ, ratio of internal to external relationship is 10% to 90%	
Fail freeze	15-24 V DC, residual ripple < 10%, with reverse voltage protection	
Second loop	0-10 V / 10 kΩ, 4-20 mA / 100 Ω	
Supply voltage		
Impedance		
Protection class	IP65	
Electrical connector	M12, 6-pin	
Power consumption	24 W (985mA) regulating, 2.4W (100mA) non-regulating	
Linearity/Hysteresis	< 0.5% FS	
Adjustment	zero, span, hysteresis	
Temperature range	0 °C to 70 °C / 32 °F to 158 °F	
Material	Ports: brass Transducer: silicon	Repeatability < 0.5% FS Mounting position any, vibration-resistant Elastomer: FKM Valves: stainless steel



Dimensions			K _v -value	Flow rate	Supply pressure	Accuracy	Connection thread	Pressure range	Order number
A	B	C							
mm	mm	mm	(m ³ /h)	l/min*1	max. bar	%	G	bar	

Proportional pressure valve									0-10 V input and monitor signal, w. coupling socket supply voltage 24 V DC, single loop	PQH1
76	122	15	0.016	280	75	0.5	G ¹ / ₈	0 ... 40		PQH1EE-40
								0 ... 50		PQH1EE-50
								0 ... 60		PQH1EE-60
								0 ... 70		PQH1EE-70

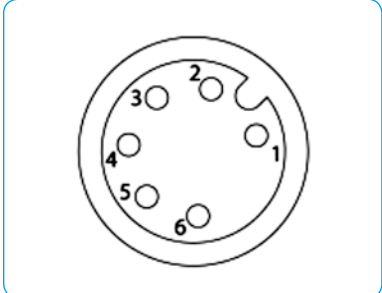
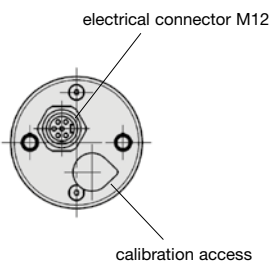
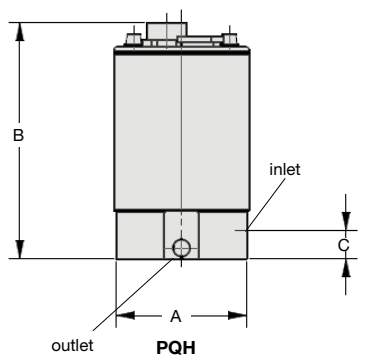
Proportional pressure valve									0-10 V input, monitor- and feedback signal, with coupling socket, supply volt. 24 V DC, double loop	PQH2
76	122	15	0.016	280	75	0.5	G ¹ / ₈	0 ... 40		PQH2EE-40
								0 ... 50		PQH2EE-50
								0 ... 60		PQH2EE-60
								0 ... 70		PQH2EE-70



PQH1

Special options, add the appropriate letter or number

4-20 mA	input and feedback signal	PQH . IC- ..
for oxygen		PQH15
stainless steel manifold		PQHSS



view from solder pin side

Pin	Description
1	TTL output
2	set point +
3	set point ground
4	supply 24V DC
5	supply earth
6	analogue output signal

connection plan

*1 at 70 bar supply pressure and open outlet